

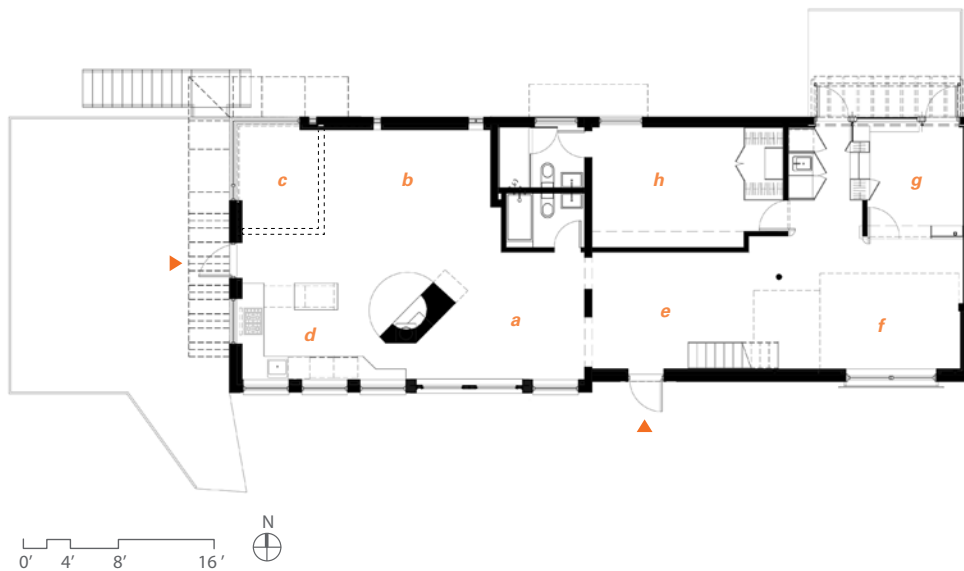
David Smith Workshop Conversion

Bolton Landing, NY

Transformation of an artist's studio into habitable spaces highlights the building's complex history, re-opening its relation with the site's pond through a contemporary language of materials.

The existing one-story, 1750 sf concrete masonry unit (CMU) structure was constructed in stages, first from 1941–1942, and subsequently in 1958 and 1961, as a sculpture studio by the artist David Smith. Beginning in 1974, the building was renovated several times, to re-purpose it as a living space, interfering with its integrity, through partial and piecemeal repairs.

The current project includes selectively removing alterations, restoring and renovating existing interior spaces, including the addition of a new mezzanine, and the opening of the space towards the site's existing pond. The improvement of the building's overall thermal performance is achieved by both by exposing historical construction technology, and upgrading windows, doors, and walls.



LEGEND

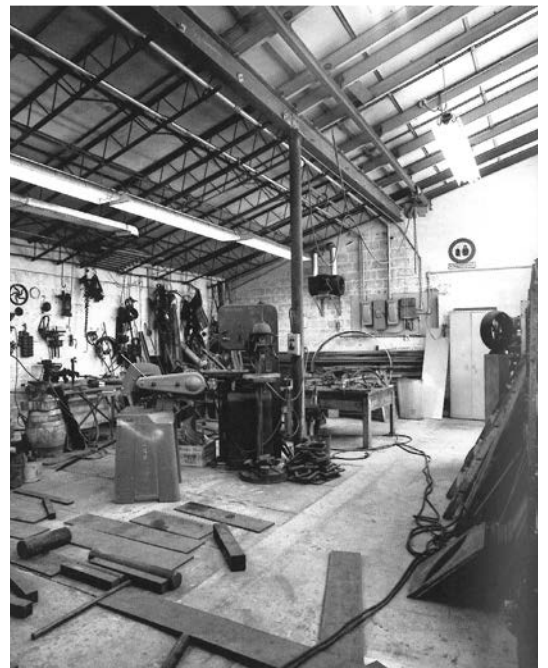
- | | |
|---------------------|-------------------------|
| a Main Entry | f Media Space |
| b Dining | g Library |
| c Living | h Master Bedroom |
| d Kitchen | ▶ Entrance |
| e Hall | |

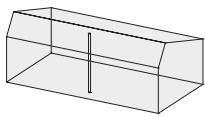




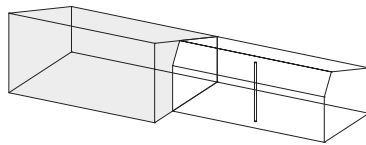
I am so aware living in this beautiful space of the light, breezes wafting in from the south doors, clouds crossing the sky, birds singing, views up the mountain... To me this is the most important thing about architecture—that a space gives you this sense of well-being and freedom and connectedness.

— Rebecca Smith, owner

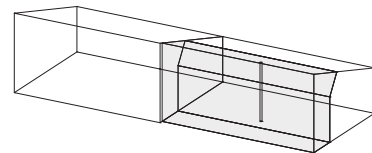




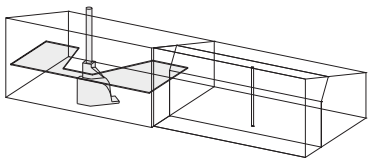
1941-2
Construction of Old Shop



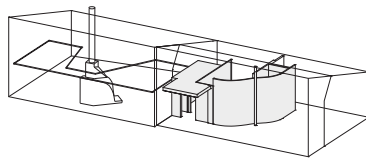
1958
Construction of New Shop



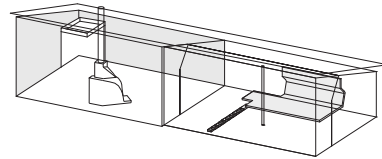
1961
Construction of Extension
to Old Shop



1974
Renovation to New Shop



1996
Renovation to Old Shop



2013
Renovation to
Old and New Shops

